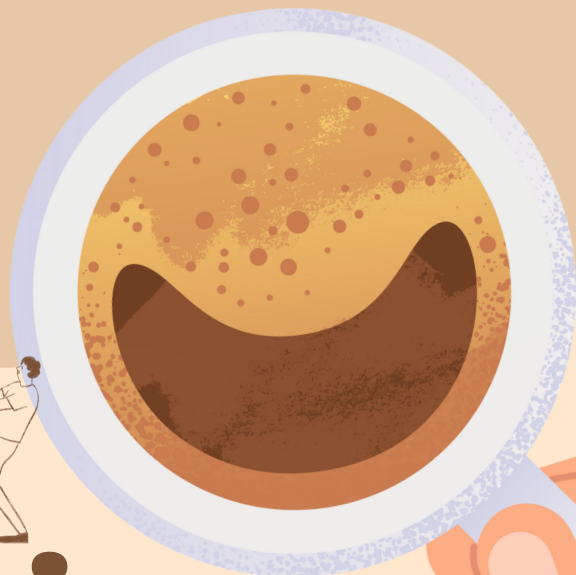




# Coffee Fundraiser



In aid of "THE WELCOME ORGANISATION"  
helping the homeless

The WELCOME Organisation help people affected by homelessness through a range of services including a Drop-in Centre, Street Outreach service, Crisis Accommodation for Women, Floating Support service, Catherine House supported accommodation for women and our Mobile Health Unit.

## SERVICES

The **Crisis Accommodation for Women** provides shelter for some of the most vulnerable women in Belfast. Annsgate is a five-bed crash facility base used by women with multiple and complex problems that include homelessness, substance misuse and mental ill health.

**Catherine House** provides 24 hour supported living for ten women experiencing homelessness who are ready to take the next steps to live independently. Catherine House is more than just a roof over their heads – it has a therapeutic ethos where trauma informed support is interwoven into daily lives.

**Catherine House** helps break the cycle of homelessness and provides the women with the skills and confidence to live independently.

*The Welcome Organisation sought permission from the family of Catherine Kenny, a vulnerable woman who died in Belfast in 2016, to name the facility in her memory.*

Our **Drop-in Centre** is open from 8am-6pm, 365 days per year. People affected by homelessness have free access to:

Hot meals | Tea and coffee | Showers | Toilets | Internet | Laundry facilities | Advice | Health support | Referrals to a GP through the Belfast Inclusion Health Service

The **Street Outreach** teams are on the streets of greater Belfast from 7am to 2am every day of the year. Our Outreach staff and volunteers are trained to provide potentially life-saving care and support for people on the street.

The **Floating Support** service is for people who have been homeless but have now accessed accommodation.

The **Floating Support** will make regular visits to the people who use the service to ensure they have everything they need in place to retain their tenancies and to turn a house into a home.

The **Mobile Health Unit** brings homeless healthcare to people affected by homelessness 'where they are at'.

The Welcome Organisation are working alongside homeless healthcare professionals who use the vehicle to provide a range of services such as drop-in clinics at hostels, vaccine boosters, sexual health checks, hepatitis checks, 'on the ground' healthcare and more.

ANY DONATION IS GREATLY APPRECIATED

Thank you

**welcome**  
ORGANISATION

from street  
to home  
on the ground  
homeless support

FANCY A  
COFFEE  
AND A CHAT?



# DONATION DRIVE



## Most Needed Items:

### NON-PERISHABLE FOOD;

coffee, sugar, spaghetti hoops, baked beans, pot noodles, instant noodles, cuppa soups, cereal, crackers, biscuits, canned potatoes, tinned veg, spam, corned beef, pasta sauces, tuna, tinned fruit, tinned ravioli, tinned (or jar) hot dogs, small/large butters, jam, peanut butter, chocolate spread, custard portions, bottled water, gravy mix.

### CLOTHES; Male

Joggers / tracksuit bottoms: sizes S, M & L  
Hoodies (all sizes)  
Jeans: waist 28 - 34  
T-Shirts: sizes S  
NEW boxer shorts / underwear: sizes S & M

### Female

Joggers / tracksuit bottoms: sizes 6 - 10  
Hoodies (all sizes)  
Jeans: sizes 6 - 10  
T-Shirts: sizes 6 - 10  
NEW underwear: sizes 6 - 10

### TOILETRIES

Deodorants, Shampoo, Conditioner,  
Shaving Foam, Shower Gel.

### MISC

Sleeping Bags, Bath Towels,  
Disposable Cups, Mugs

Thank you

IN AID OF "THE WELCOME ORGANISATION"

**welcome**  
ORGANISATION

from street  
to home  
on the ground  
homeless support

